



Special Populations

TEXANS CAN ACADEMIES SPECIAL SERVICES

Special Populations

- ★ [Information on Special Education](#)
- ★ [Compensatory Services](#)
- ★ [SPEDTex](#)
- ★ [Records Request](#)
- ★ [Child Find](#)
- ★ [504](#)
- ★ [Dyslexia](#)
- ★ [Transition Services](#)
- ★ [Directory](#)
- ★ [SB 139 - English](#)
- ★ [SB 139 - Espanol](#)
- ★ [Resources](#)





Special Populations

TEXANS CAN ACADEMIES SPECIAL EDUCATION

Information on IDEA:

[Individuals with Disabilities Education Act - Fact Sheet for Families \(English\)](#)

[Ley de Educaci para Personas con Discapacidad - Hoja de datos para las familias \(Español\)](#)

Required Postings:

[Compensatory Services - English](#)

[Servicios Compensatorios - Espanol](#)

[Multi-Tiered Systems of Support \(MTSS\)](#)

[Sistemas de Soporte Multi-Niveles \(MTSS\)](#)

Information on Special Education Services:



The Special Education Information Center (SPEDTex) provides resources and interactive features for increasing family awareness of disabilities and special education processes, with the goal of improving partnerships between schools and families.

Contact information:

Phone: 1-855-773-3839

Email: inquire@spedtex.org

Live Chat: www.spedtex.org



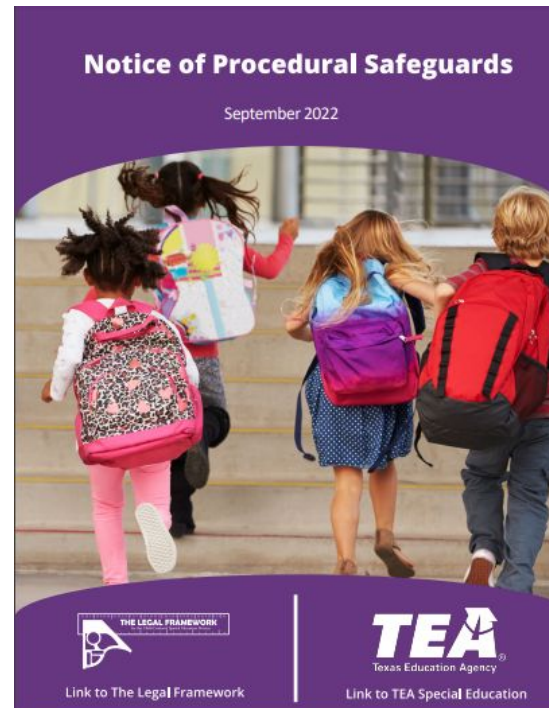
Special Populations

TEXANS CAN ACADEMIES SPECIAL EDUCATION

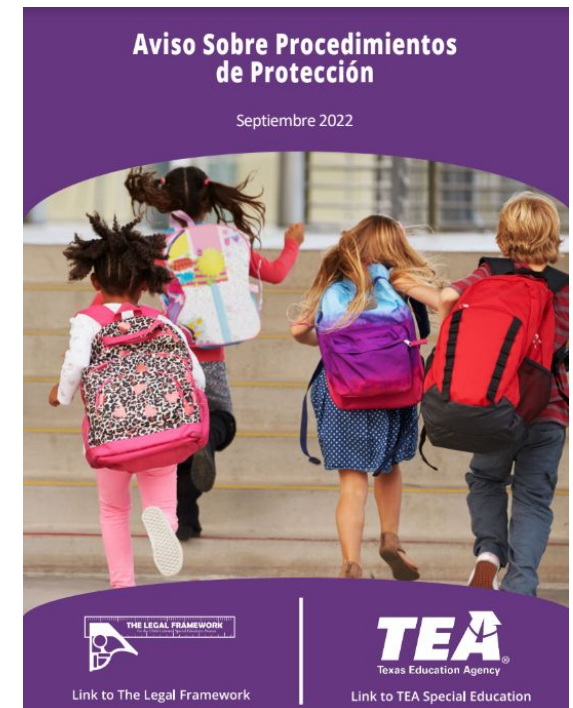
Procedural Safeguards

Notice of Procedural Safeguards and Parent's Guide to the ARD Process Update

In September 2022, the Texas Education Agency (TEA) updated the *Parent's Guide to the Admission, Review, and Dismissal Process* and the *Notice of Procedural Safeguards* documents.



ENGLISH



SPANISH



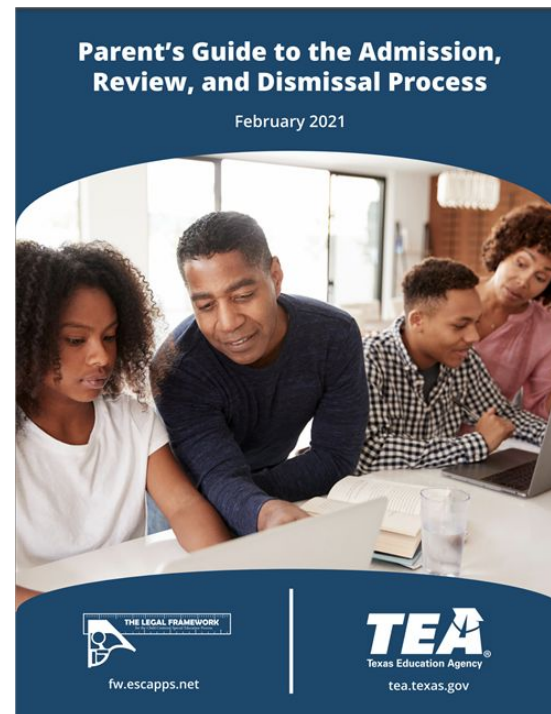
Special Populations

TEXANS CAN ACADEMIES SPECIAL EDUCATION

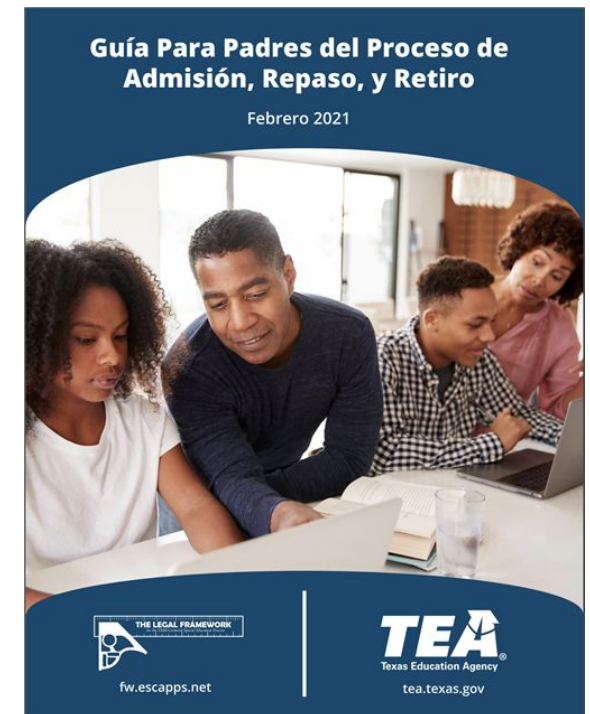
ARD Process 2021

The Parent's Guide to the ARD Process 2021 is now available.

In October of 2020, the U.S. Department of Education, Office of Special Education Programs (OSEP) required the Texas Education Agency (TEA) to make several edits to the *Parent's Guide to the Admission, Review, and Dismissal Process* and the *Notice of Procedural Safeguards* documents.



ENGLISH



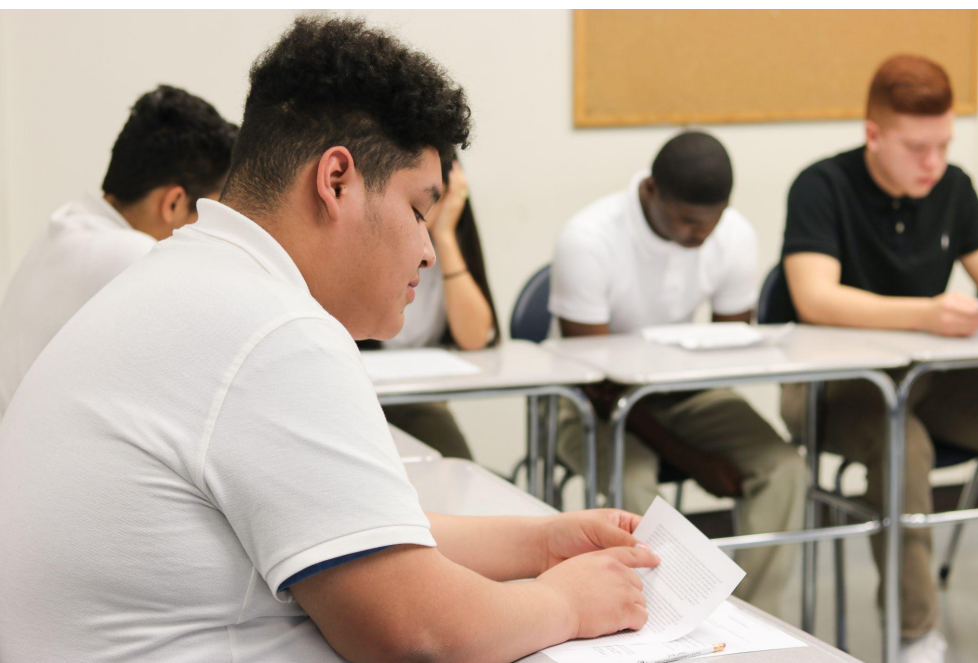
SPANISH



Special Populations

TEXANS CAN ACADEMIES SPECIAL EDUCATION

Records Request



Austin: Alicia Cruz aacruz@texanscan.org

Dallas - North: Martha Moreno mmoreno@texanscan.org

Dallas - Grant East: Barbara Nero bnero@texanscan.org

Dallas - Pleasant Grove: Silvia De Leon sdeleon@texanscan.org

Dallas - Oak Cliff: Jacqueline Andrade jandrade@texanscan.org

Carrollton/ Farmers Branch: Mary Simpson
mesimpson@texanscan.org

Ft. Worth - Westcreek: Mary De Santiago mdesantiago@texanscan.org

Ft. Worth - Lancaster Ave: Cynthia Fuller cfuller@texanscan.org

Garland: Sharon Lidy slidy@texanscan.org

Houston - North: Diane Pope dpope@texanscan.org

Houston - Hobby: Erika Lopez Delgado elopezdelgado@texanscan.org

Houston - Southwest: Deirdre White dwhite@texanscan.org

San Antonio: Maria Serna mserna@texanscan.org



Special Populations

TEXANS CAN ACADEMIES SPECIAL EDUCATION

Transition Services

The **Transition Services Department** provides transition planning and services to students with disabilities. Transition services is a coordinated set of activities for a child with a disability that-

(A) is designed to be a results-oriented process, that is focused on improving the academic and functional achievement of the child with a disability to facilitate the child's movement from school to post-school activities, including post-secondary education, vocational education, integrated employment (including supported employment), continuing and adult education, adult services, independent living, or community participation;

(B) is based on the individual child's needs, taking into account the child's strengths, preferences, and interests;

(C) includes instruction, related services, community experiences, the development of employment and other post-school adult living objectives, and, when appropriate, acquisition of daily living skills and functional vocational evaluation.

Contacts

Stacey Carroll

Special Education Coordinator
(Transition and Employment
Designee)

(469) 850-7778

scarroll@texanscan.org

Resources

[Texas Transition](#)

[Texas Transition and Employment Guide](#)
[- Other Languages](#)



Special Populations

TEXANS CAN ACADEMIES SPECIAL SERVICES

| | | |
|-------------------------|------------------------------------|--|
| Kimberly Chesney | Director of Special Services | kchesney@texanscan.org |
| Emmanuel Ibe | Coordinator of Special Education | elbe@texanscan.org |
| Stacey Carroll | Coordinator of Special Education | scarroll@texanscan.org |
| Olga Paniagua | Executive Administrative Assistant | opaniagua@texanscan.org |



Special Populations

TEXANS CAN ACADEMIES SPECIAL SERVICES

Section 504 Services

What is Section 504?

Section 504 is a federal civil rights law that focuses on the non-discrimination of students with disabilities. The law says that a public school, or any other federally funded public facility, cannot discriminate against a student because of a disability and must be given the same opportunities to participate in academic and extracurricular activities.

Under Section 504, students with disabilities may receive accommodations and services to ensure that their individual educational needs are met as adequately as those of non-disabled students.

For information about 504 at Texans Can Academies, please contact: Kimberly Chesney

Phone: 214-944-1959

Email: kchesney@texanscan.org

Parent Resources:

[Section 504 - Fact Sheet for Families](#)

[Artículo 504 - Hoja de datos para las Familias](#)

[Parent and Educator Resource Guide to Section 504 in Public Elementary and Secondary Schools](#)



Special Populations

TEXANS CAN ACADEMIES SPECIAL SERVICES

Dyslexia Services

What are the characteristics of dyslexia?

A child with dyslexia may have difficulty with:

- reading single words learning
- letter names and sounds
- decoding (breaking apart) unfamiliar words
- reading fluently
- spelling
- understanding a text or story
- written expression
- remembering common words (vocabulary or names of objects)
- putting rhymes together

**There is not a set list of characteristics for dyslexia - it looks different for every child!*

[Dyslexia Fact Sheet for Families \(English\)](#)

[Dislexia - Hoja de datos para las familias](#)

[texas-dyslexia-handbook-2021.pdf](#)

Dyslexia Handbook Update: 2021 English
[Dyslexia Handbook 2021 Update: Important Changes for Families to Understand](#)

Actualización Del Manual Dyslexia: 2021 Español
[Actualización del manual de dislexia 2021: CAMBIOS IMPORTANTES QUE LAS FAMILIAS DEBEN ENTENDER](#)

For more information, contact Erica Hefner -
ehfner@texanscan.org